

KING POMPA[®]

Mechanical Heart of the Process



INTERNAL GEAR PUMPS

Dear Industrialist,

We believe that choosing the right producer will be the first step in selection of a product. As a producer ourselves, we believe that we deserve to be defined as the best in our class.

Our Past

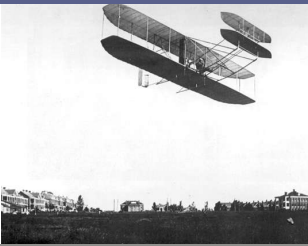
Our company was founded by Ö. Faruk Polatoğlu, who, as a civil engineer, was specialized in pump production and system calculations. Mr. Faruk got acquainted with the pumps first in 1964 with the rotodynamic pumps. He entered pump production business first with the trading of the pumps and relevant accessories and the first trial production began in 1977. In 1982 he founded King Pompa and Makine Sanayi Ticaret Ltd Şti for serial production. Our company still continues to provide services to different industries with production of positive displacement pumps and with consulting services in pump engineering.

What matters to us?

- A respected corporate structure
- Our vision for development
- Mutually profitable operations
- A management view that respects people
- Solutions customized according to the needs of the customers
- Being among the top two preferred companies for any industry we serve
- Maintaining the customer loyalty
- Providing non-problematic, modern, economical products
- Following up and solving the problems
- Regularly updated organization

Our working style

We are proud to be designing and producing new products all the time. We know that we can succeed only when we enjoy what we are doing. We focus on our core business and follow up the innovations. Drawing on our continuously renewed experiences and feedbacks of our customers, we improve our products. 15% of our turnover is used solely for the technical developments.



Our indispensables

- Providing ideal solutions to the users of our pumps,
- Helping you with anything related to pumps,
- Seeing our products as a mirror reflecting us,
- In pump selection, thinking as if we will be using every pump,
- Taking care of our customers one by one and meeting their needs completely,
- Responding fast in urgent situations,
- High quality communication,
- Innovation

KING POMPA

Pump selection

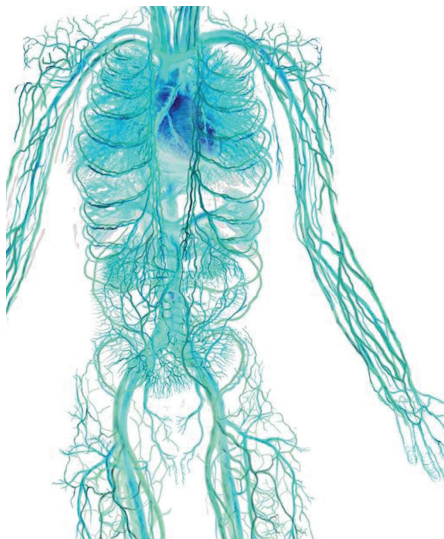
"The selection of a pump is not the final step but rather the first step of a new process or a project". Indeed, the relationship between the pipeline and the pump is similar to that between the heart and the veins in the human body. With a piping system which will not allow you to reach the desired capacities, no pump can be effective. Here are some of the suggestions of our engineers that you should heed, if you are seeking a pump:

- First of all, you have to determine the minimum and maximum capacity and pressure you need.
- Then let us choose the pump with the suitable capacity for the job you will carry out.
- Then lay the pipes in accordance with the operating conditions of your pump and your facilities.
- This will prevent overburden and unnecessary failures in your system.

Even in the heart operations, the operation is done most of the time on the veins. The 'heart' in other words 'the pump' is not touched. Most of the time congested or blocked veins are expanded or replaced as they make the blood flow harder, increase the pressure and strain our heart, namely the pump. In the same way, an erroneously designed pipeline will reduce the efficiency of a pump and shorten its life. Please do not hesitate to contact our engineers to build a well designed piping and long living pump system.



Our pumps are the hearts of the processes



Our heart is a positive displacement pump as well.

About the internal gear type pumps

Our positive displacement pumps that we produce with the capacity to transfer hundreds of different liquids of high or low viscosity, can be used in almost any industry. Our pumps perform well with the selection of the best materials and structures suitable for the operation environment. Thanks to their symmetrical inner structure, they can work in both directions. They ensure right flow and show perfect suction performance.

The excellence of the working principles of our internal-gear type pumps enable them to meet the needs of differing applications areas in terms of construction. Heating or cooling jackets, by-pass valves integrated into the pump, various sealing elements and application types are among the advantages provided by our pumps. Further modifications are available on request.

Some of the industry areas we serve

• Chocolate • **Glucose & Fructose** • Cocoa oil • **Maltose & Syrups** • Vegetable oils • **Animal oils and blood** • Gelatin • **Molasses** • Glycol • **Paint** • Varnish • **Glue o Alkyd** • **Printing Ink** • Solvent • **Enamel** • Xylene • **Toluene** • Wax / Paraffin • **Perfume** • Soap • **Detergent** • Glycerin • **Oil acids** • Oil alcohols • **Boiled oil** • Petroleum & Products • **Naphtha / Asphalt / Bitumen** • Urea / Formaldehydes • **Polyol & Isocynate** • Fuel Oil / Diesel Oil • **Amines** • Hot-melt • **Spelter** • Pat • **Latex** • Melamine • **PVA** • Mineral Oils • **Vibrotal**



- Home/office furniture
- Insulation panels
- Sponge
- Polyurethane
- Polyol
- TDI



- Process pumps
- Raw material transfer pumps
- Tanker loading/unloading pumps
- Paint industry • Paint
- Varnish • Alkyd
- Oil and oil acids
- Polyester • Nitro cellulose
- Printing inks



- Chemistry
- Glikol
- Ammonium Hydroxide
- Benzophenone
- Chloromethane
- Divinylbenzene
- Ethanolamine
- Furfuraldehyde



- Construction industry materials
- Insulation cloths and panels
- Bitumous clothes
- Insulation materials



- Double glass production
- Hotmelt Transfer pumps
- Hotmelt extrusion pumps



- Glue industries
- Solvent-based glues
- Water-based glues
- Polyurethane-based glues
- Elastomer-based glues
- Special sea glues
- Decorative candle production
- Paraffin
- Wax



- Petroleum industry
- Ham Petrol
- Asphalt
- Fuel Oil
- Diesel Oil
- Kerosene
- LPG



- Refineries
- Ports + Docks
- Storage facilities
- High capacity shipments



- Maritime industry
- Ship and port pumps
- Board pumps
- Pumps for coasters and arks
- Engine oils + Lubricants
- Performance increasing liquids
- Special fuel additives

- Food industry
- Chocolate industry
- Ice-cream industry
- Nut cream
- Vegetable oils
- Cocoa oil
- Cocoa liquor
- Wafer dough
- Sweeteners
- Gelatin
- Lecithin
- Honey



- Vegetable oils
- Sunflower oil
- Corn seed oil
- Soy oil
- Oily seeds
- Oily soil
- Oils with perlite
- Raw pills
- Palm Oil



- Cleanser industry
- Soap stock
- Liquid soaps
- Glycerin
- Shampoo
- Detergents
- Brilliantine / Hair gel
- Perfumery



- Sugar industry
- Sugar factories



- Sugar syrup
- Molasses
- Viprotal
- Animal breeding industry
- Feed industry
- Animal oils
- Heavy mollasses
- Distillation wastewater
- Gelatin
- Tallow



- Yeast industry
- Soft confectionery
- Various glucose
- Fructose / Maltose
- Gum industry
- Glucose and mixtures
- Hot syrups
- Fructose / Maltose



- Honey
- Fluids with high viscosity
- Semi-viscous fluids
- Non - viscous fluids
- Special applications and fluids



- Logistics
- Road tankers
- Loading / unloading pumps
- Vehicle-top pumps



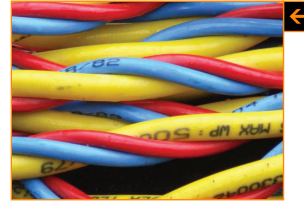
- Railway tankers
- Loading/unloading pumps
- Mobile pumps

- High capacity pumps
- Pumps for the asphaltting machines



- Vehicle-top LPG pumps
- Fixed LPG pumps

- Rubber reinforced asphalt
- Reactor feeding and emptying



- Asphalt terminals
- Filling stations

- Production of automobile tyres
- Synthetic and natural rubber pumps
- Liquid rubber additives
- Latex transfer and dosage pumps



- Iron and steel industry
- Heavy oils
- Fuel oil

- Pharmaceuticals
- Chemicals
- Automotive industry
- Special pumps



- Alkyd
- Varnish/Polish
- Polyester
- Game parks and water slides manufacturing
- Sea paints and coatings

- TEROSON
- Cleansers
- Softeners
- Detergents and liquid cleaners
- Texapon, Arquad and other similar chemicals
- LABSA, SLES



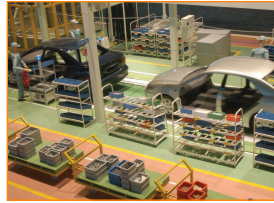
- High temperature environments
- Boiled oil pumps
- Crude oil transfer pumps
- High capacity pumps

- Textile chemicals
- PAT
- Fabric glues
- Silicones
- Softeners
- Detamin



- Generator fuel pumps
- Fuel oil and diesel oil pumps

- Electricity industry
- Cable production
- Transformer oils



“INTEGRAL” SERIES

Heavy duty pumps

PERFORMANCE VALUES FOR THE INTEGRAL SERIES PUMPS

Capacity	0 - 340 m ³ /hr	0 - 1500 GPM
Differential pressure	0 - 14 Bar-g	0 - 200 PSI-g
Suction ability	600mmHg	24”Hg
Viscosity	1 - 480,000 cSt	28 - 2,200,000 SSU
Operation temperature	-75° + 370°C	-99° + 700°F

Hot pumps

Our “Integral” series gear pumps are heavy duty pumps with their constructions and have a wide range of uses. Depending on the use areas they can be provided for use with heating jackets. Although the number of jackets and the place vary according to the preferences of the user, it is possible to use jackets in the three different zones of an 'integral' series pump. These are:

- Pump head
- Pump casing
- Pump console (bearing and seal)



Integral series basic construction



Jackets on the head and the console & with NPT ports



Jackets on the head and the console & with flange ports

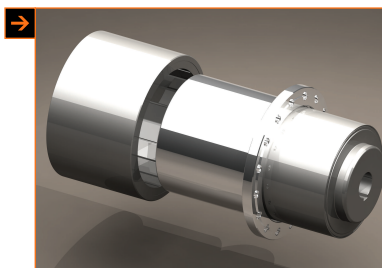
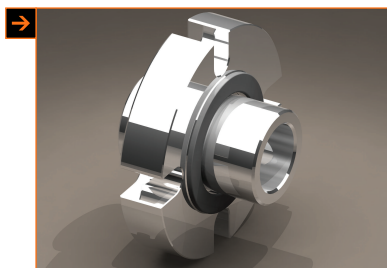
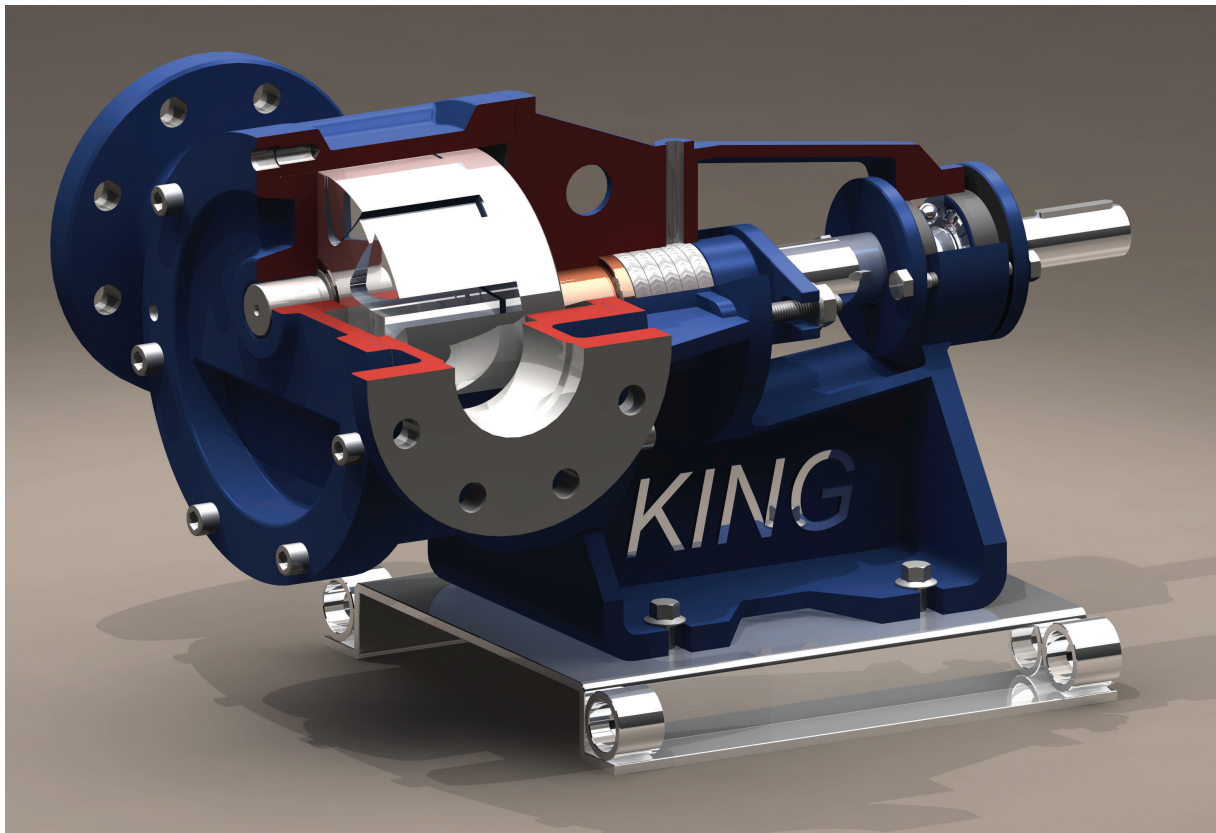


Double safety valve pump with side ports

Safety valve pumps

A safety valve can be installed on the pump to protect the pump and the installations at the system from any abnormal pressure fluctuations in the system. For the transfer of highly viscous liquids and bi-directional operation, two bypass valves can be installed. Pressure safety valve can be installed on different parts of the pump. These are:

- Pump head
- Pump casing



"Integral" series gear pumps can be furnished with different nonleakage systems. These are:

- Soft seals packing
- Mechanical seals
- Cartridge-type, ready-to-assemble, mechanical seals
- Hermetical equipments with magnetic couplings
- Special additional designs

"Integral" series gear pumps can be produced from different cast materials.

- Cast iron with gray iron graphite
- Ductile iron
- Carbon steel
- Stainless steel AISI 304/316
- Bronze
- Special orders



OPTIMAL SERIES

Motor speed pumps

PERFORMANCE VALUES FOR THE OPTIMAL SERIES PUMPS

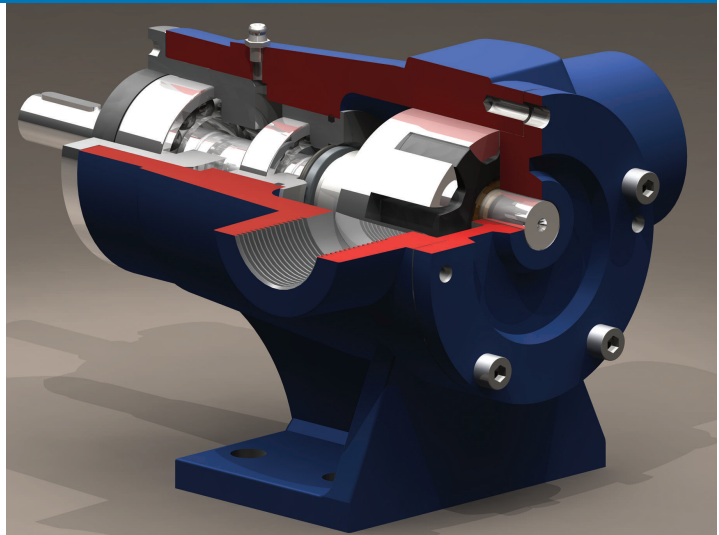
Capacity	0 - 10 m³/hr	0 - 44 GPM
Differential pressure	0 - 14 Bar-g	0 - 200 PSI-g
Suction ability	600mmHg	24" Hg
Viscosity	1 - 3300 cSt	2 - 15,000 SSU
Operating temperatures	-4° + 180°C	-40° + 350°F

Direct drive motor speed pumps

Our "OPTIMAL" series pumps are special pumps that can be driven at high speeds.

Pump rotor and axle are balanced with the frictionless ball bearing.

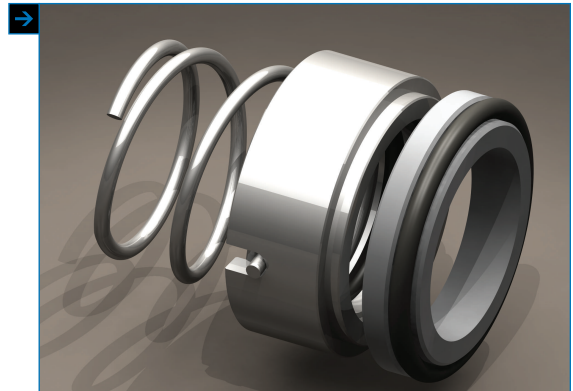
The body is monoblock and the pump is designed to operate at high speed.



Cutaway model of basic construction



Drive at the motor speed



Mechanical seal standard

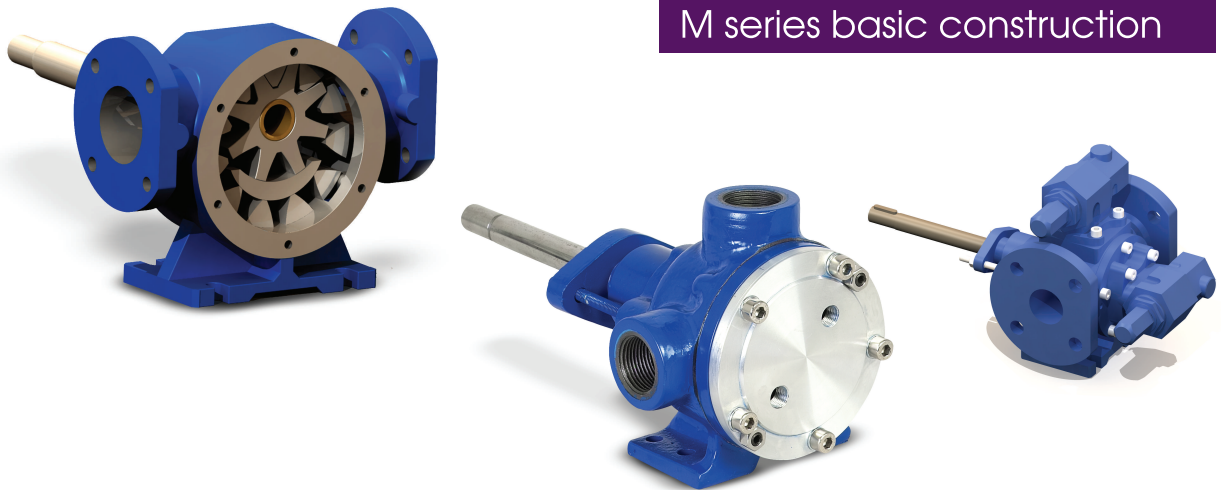
M SERIES

General duty pumps

PERFORMANCE VALUES FOR THE M SERIES PUMPS

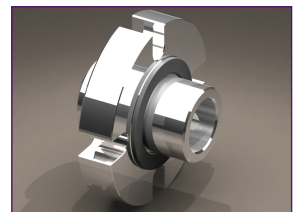
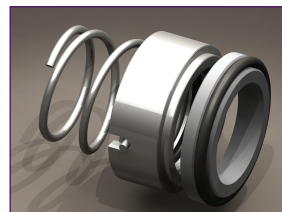
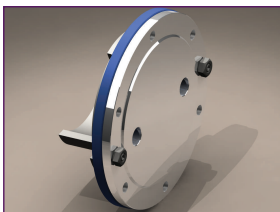
Capacity	0 - 50 m ³ /hr	0 - 220 GPM
Differential pressure	0 - 7 Bar-g	0 - 100 PSI-g
Suction ability	600 mmHg	24" Hg
Viscosity	1 - 50,000 cSt	1 - 250,000 SSU
Operating temperatures	-15° / + 230°C	-60° / + 450°F

M series basic construction



The design of the "M" series gear pumps is based on the 'Excellence of the Simplicity' principle. The advantages of the simplicity of the constructions:

- Easy to mount and demount.
- Short mount length, takes up less space.
- Ideal for use on particularly on the road vehicles.
- Includes minimum number of parts: the most basic possible version of internal gear pump.
- Investment costs are low.
- Driven at low and medium speeds.



"M" series gear pump can be equipped with different sealing options. These are;

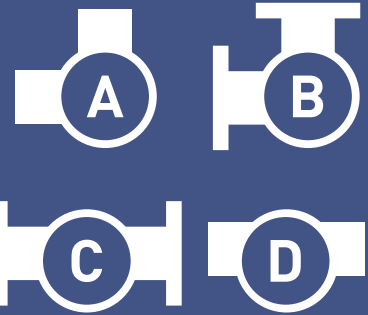
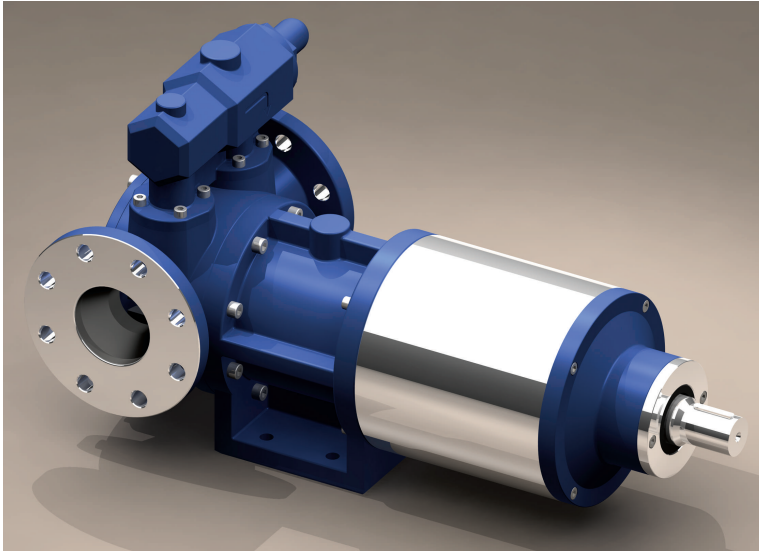
- Soft seals (packing)
- Mechanical seals
- Cartridge type, ready-to-assemble mechanical seals



"M" series gear pumps can be produced from different cast materials.

- Cast gray iron
- Ductile iron
- Carbon steel
- Stainless steel AISI 304/316

Pumps with magnetic coupling



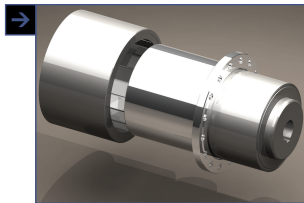
Magnetic pump body selections

- These special pumps which are produced by us for the first time in our country, demonstrate our specialty and innovation in the engineering and design areas. The magnetic drive system, the latest point in the pump nonleakage, is provided to industries with the reliability of KING POMPA in Turkey.

- Magnetic coupling system which was first used in the transfer of hazardous materials in the world, now is being used for the transfer of non-hazardous materials like mineral oil.

- Magnetic coupling pumps have no nonleakage elements which makes sure that no wearing or failure happen. Due to the fact that the pump is completely closed, nonleakage is ensured.

- Motor or drive unit's output moment is transferred to the pump gear through magnetic forces and no mechanical contact is required for the transfer of force.

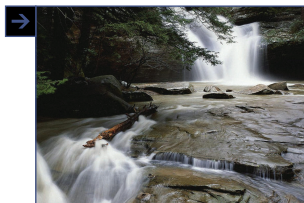


Magnetic coupling group



Different cast material selections

- Cast gray iron
- Ductile iron
- Carbon steel
- Stainless steel AISI 304/316



Perfect Sealing

Uses of the magnetic pump

- Facilities with very valuable maintenance times
- Liquids which should not contact air
- Liquids that are not lubricating
- Hazardous "Toxic" liquids
- Inflammable liquids
- Expensive liquids

Magnetic pump characteristics

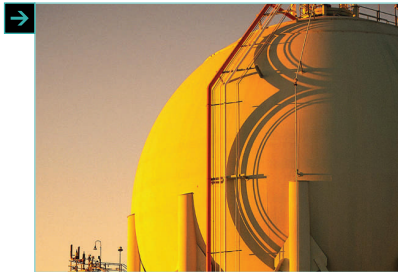
- Max. 50m³/hour (220GPM)
- Max. 10 bar
- Max. 1500 rpm

FIRST in
Turkey!

Engineering Services and Consulting



The pump is the mechanical heart of the process, which means that when the pump fails the whole system will fail. The system must be designed as a whole to make sure that the pump runs smoothly and trouble free. In order for your facilities to operate in an uninterrupted manner, all calculations must be done at the first installation. We are at your service with our team of engineers, wide experience and technical know-how to make sure that you reach these goals.



We come up with ideas and solutions in line with the investments and process you plan, in accordance with your requests.



We take part in the process of the renewal, improvement or expansion of an existing facility. We help with everything requiring pump engineering. Our target is turning the investments into productive and profitable facilities.



DO NOT FORGET !

The pipes are the veins of the system and the easy flow of the liquid inside shows that the system works right. We cannot change the rules of physics but we can build ideal facilities using right calculations. For 'piping' that is as important as the pump selection, we help the industrialists with their engineering requirements.

References

PETROL

HABAŞ	OPET	AREVA
PETROL OFİSİ	PİRELLİ	TURKUAZ KABLO
SHELL	HES KABLO	MOBİL
TOTAL	ABB ELEKTRİK	TÜRK HAVA YOLLARI

CHEMISTRY

HENKEL TÜRKİYE	UNILEVER	ALFA KİMYA
HENKEL İRAN	COLGATE - PALMOLIVE	KASTAMONU ENTEGRE
SOLVENTAŞ	SUN CHEMICAL	HUNCA KOZMETİK
COGNIS	YILPORT LİMAN TESİSLERİ	ZORLU

FOOD

CARGILL TÜRKİYE	BURGAZ RAKI	FRESH CAKE
CARGILL RUSYA	AK MAYA	GSF
CARGILL SURİYE	ALGIDA DONDURMA	ÖZMAYA
LE SAFFRE	PANDA DONDURMA	UNILEVER
ÜLKER	BAYCAN	BİFA BİSKÜVİ
TADİM	PERFETTİ	ÜLKER KAZAKİSTAN
BİSKOT	ETİ	ÜLKER İRAN
BESLER	KENT	KOMİLİ
AK NIŞASTA	KOSKA	

PAINT

BETEK / FİLLİ BOYA	İBA VALRESA	DYO
KAYALAR KİMYA	ÇBS / PAYLAŞIM	POLİSAN
GENÇ / RENNER	HOB	
ECE / ERCO	MARSHALL	

POLYURETHANE

İZOCAM	MARTUR	VESTEL
DOW CHEMICALS	NOVA / AYDIN	İŞBİR SÜNGER
BASF	BİRLİK SÜNGER	
PİMSA ADLER	ÜROSAN MOBİLYA	

OTHER

KALEBODUR SERAMİK	KARABÜK DEMİR ÇELİK	
-------------------	---------------------	--



KING POMPA ve MAKİNA SANAYİ TİC. LTD. ŞTİ
İmes Sanayi Sitesi B Blok 207 Sk. No:3 Y. Dudullu / İstanbul / Türkiye
T: +90 216 499 02 06 - 07 o F: +90 216 364 77 80
www.kingpompa.com king@kingpompa.com